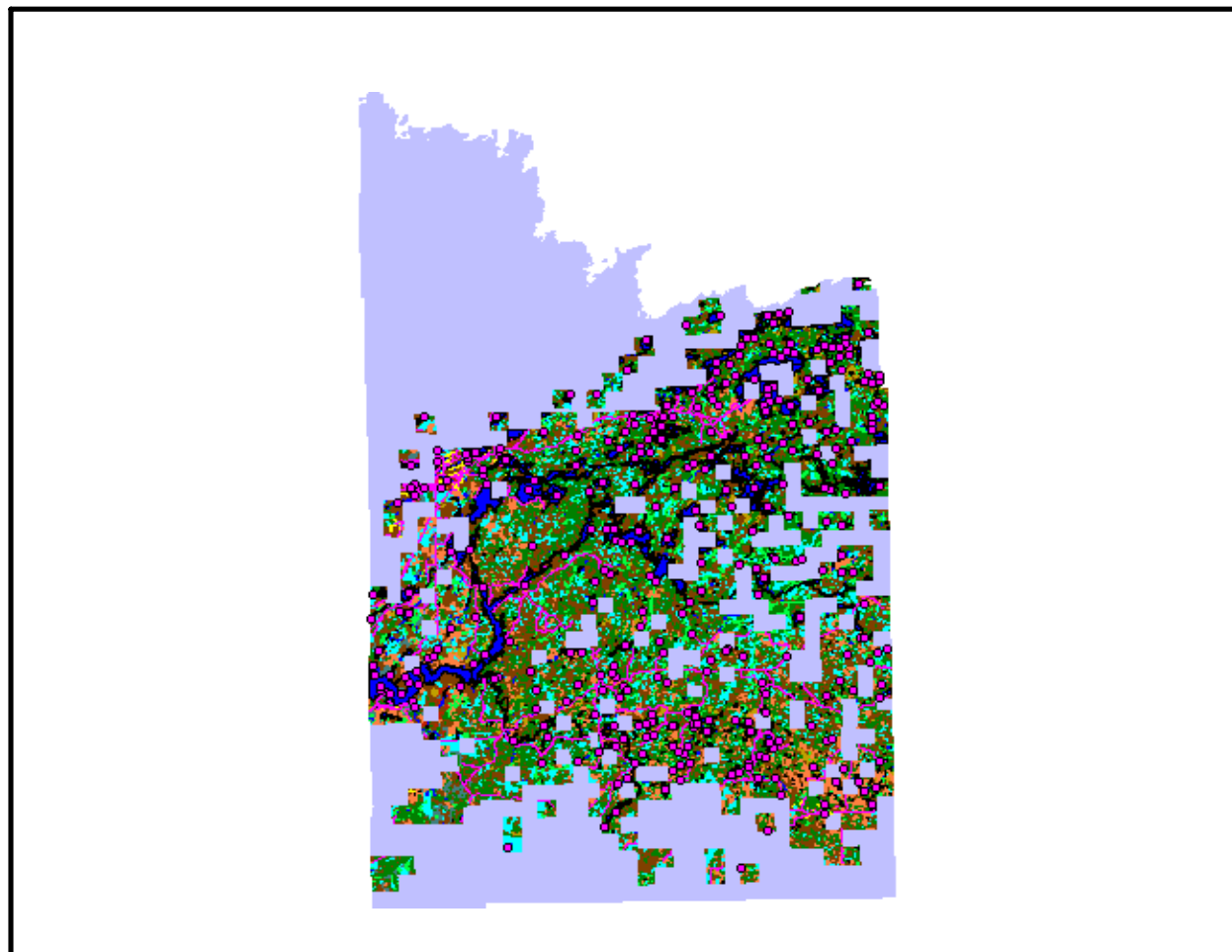


Sections with Two or More Wolf Observations



-  Feature Names
-  Highways/Roads
-  Lakes
- Land Cover Types
 -  Coniferous forest
 -  Deciduous forest
 -  Farmsteads and rural residences
 -  Grassland
 -  Gravel pits and open mines
 -  Mixedwood forest
 -  Open water
 -  Other rural developments
 -  Regeneration/Young Forests
 -  Shrubby grassland
 -  Urban/industrial (cities & towns)
 -  Wetlands - bogs
 -  Wetlands - marsh and fens
 -  Study Area Background

